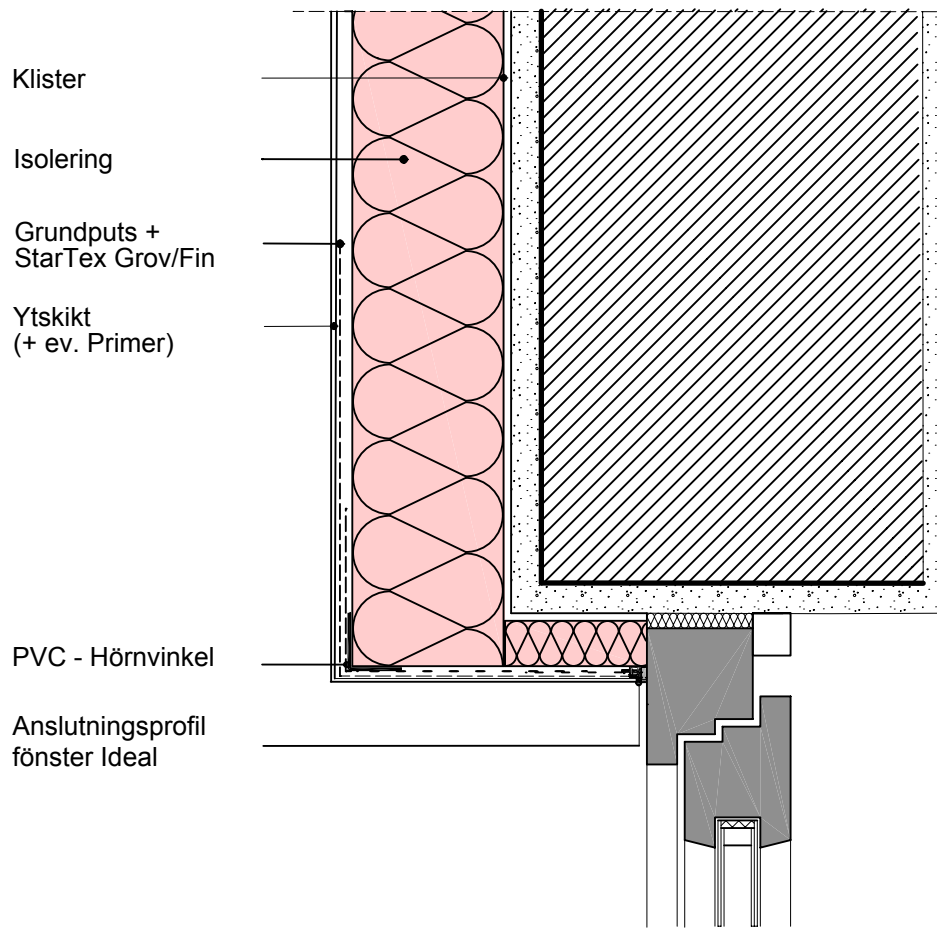


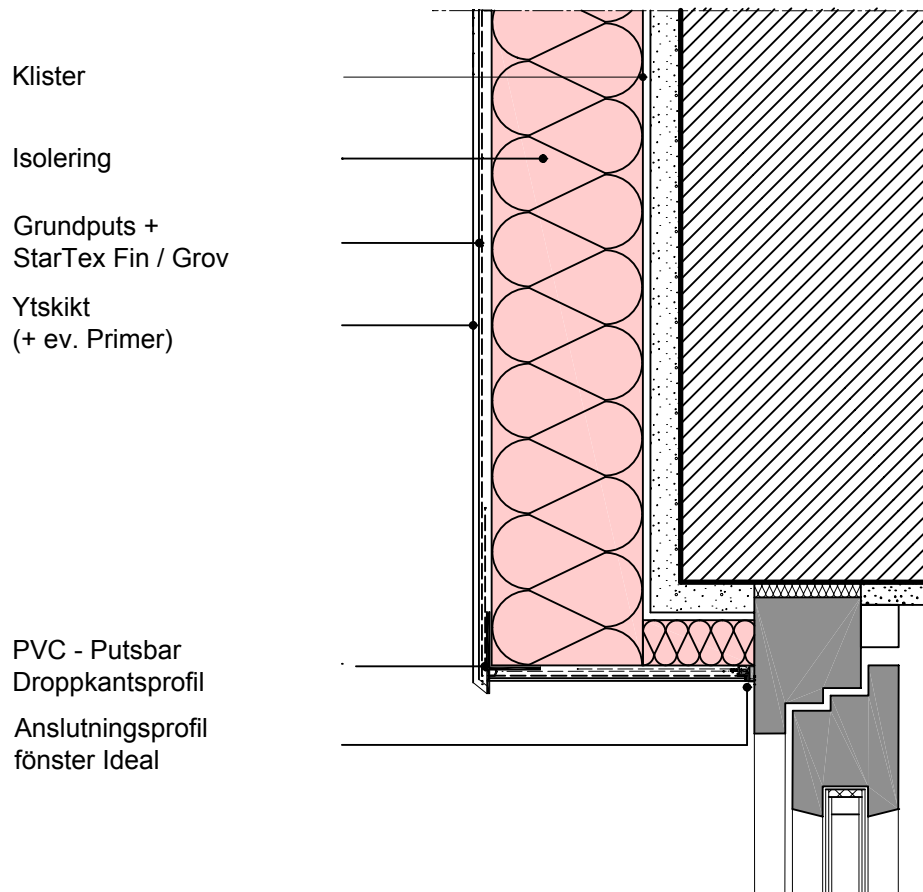
B 1.12

Fönsteranslutning



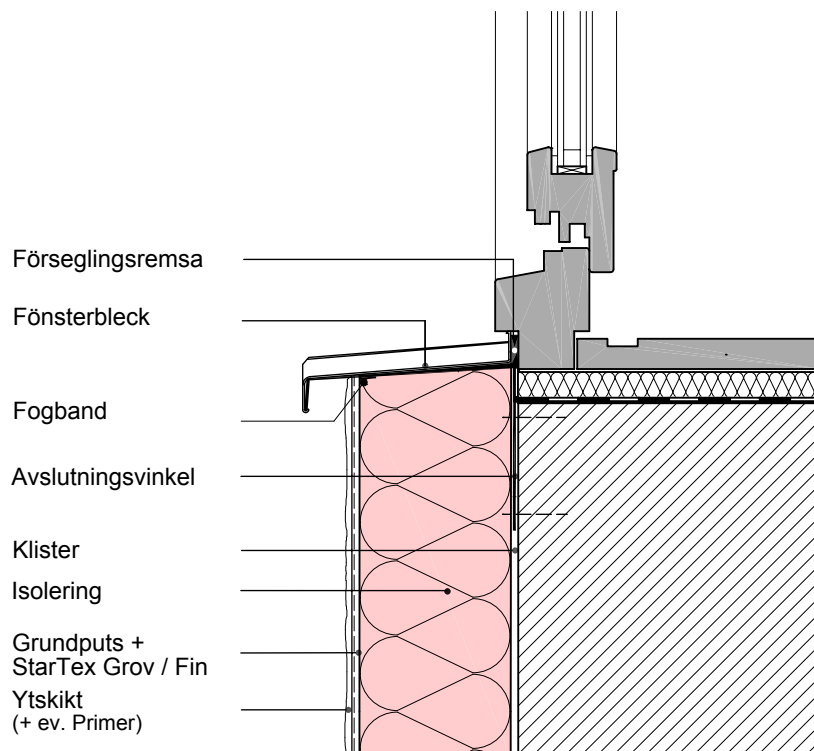
B 1.24

Droppkantsprofil



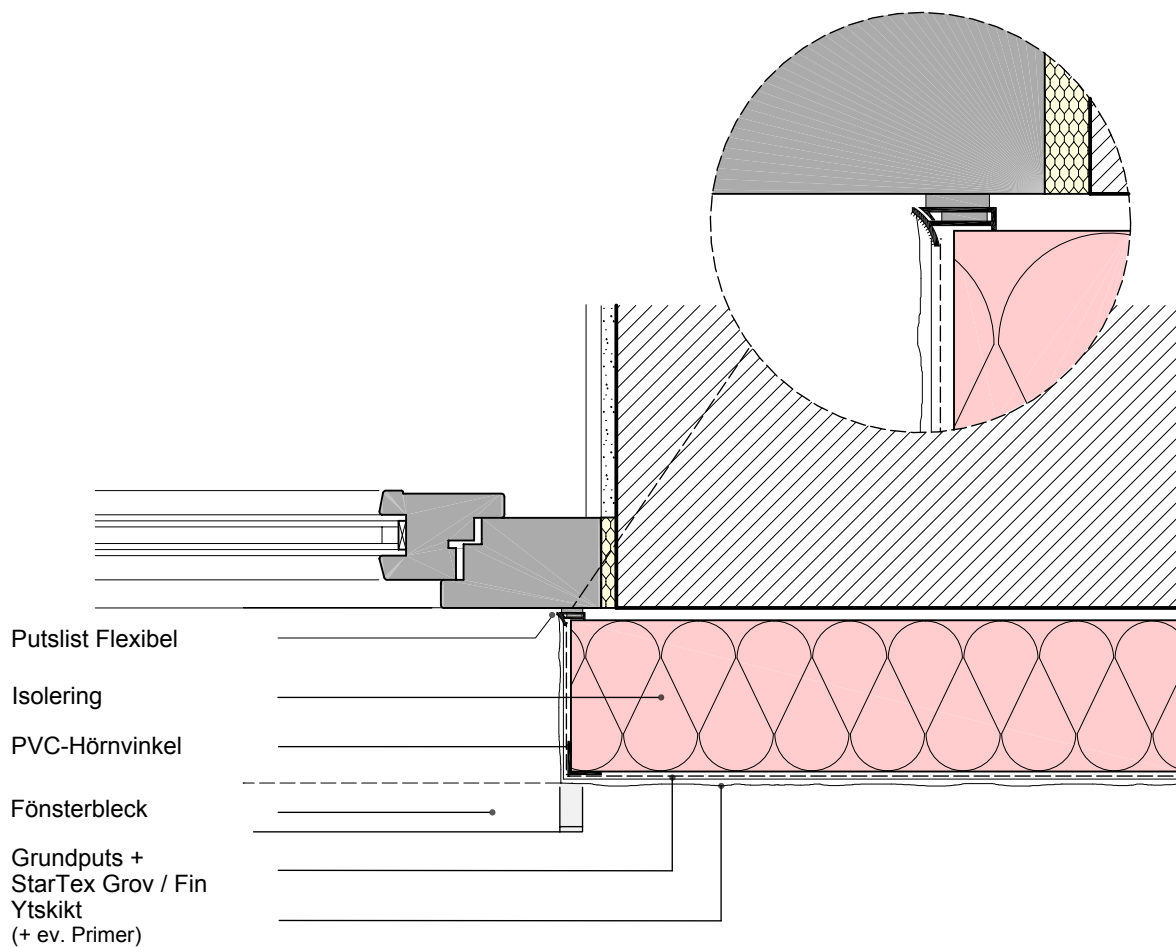
B 2.10

Fönsterbleck / Fönster flush mot stomme



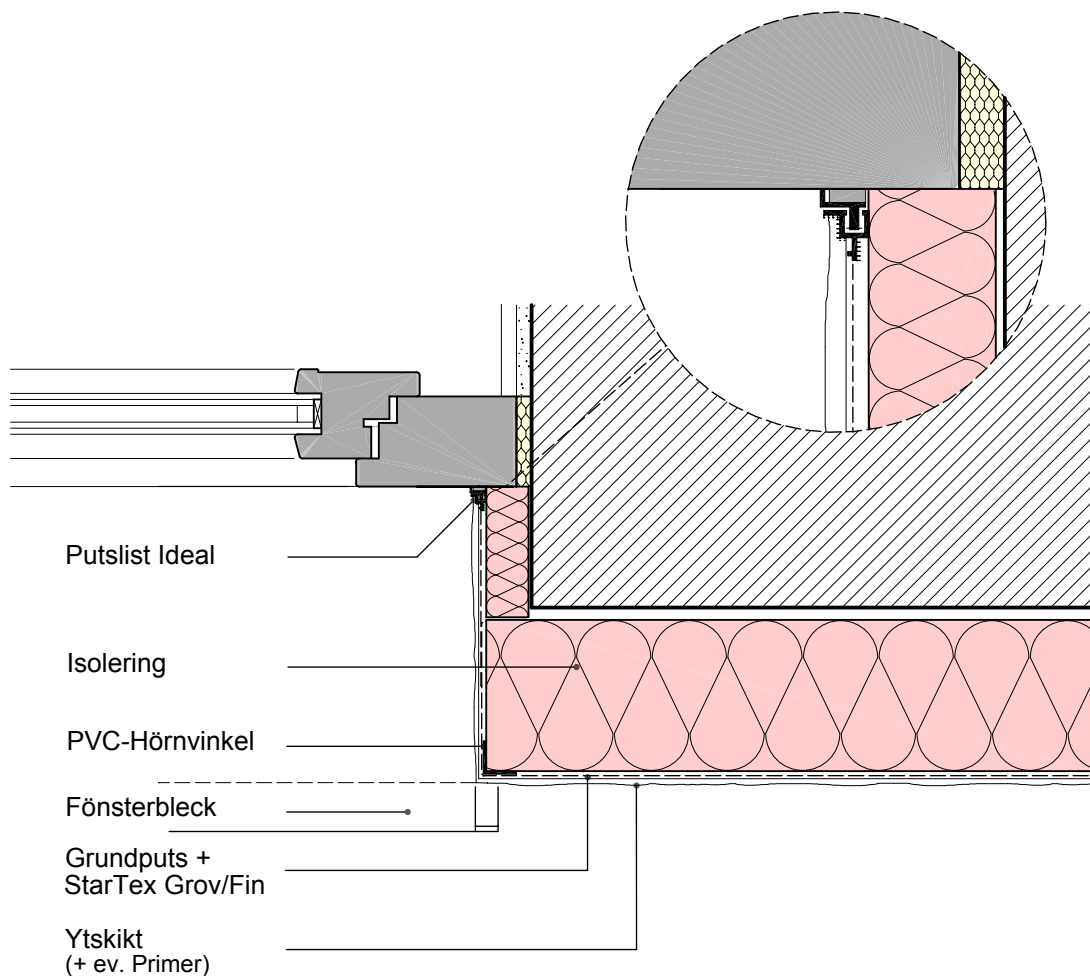
B 3.10

Montage isolering / Fönster flush stomme med flexibel anslutningsprofil



B 3.12

Montage isolering / fönster med putslist



E 1.10

Förstärkning - Diagonalarmering Öppningar

